

RAIL SPUR



THEN

\$500,000

Cost of bringing the rail spur to Denver

NOW

What's \$500,000 worth today?

\$7,790,708

It all began when the Denver Board of Trade raised funds to build a rail spur from Cheyenne to Denver in 1867.

CHAMBER LEADERSHIP

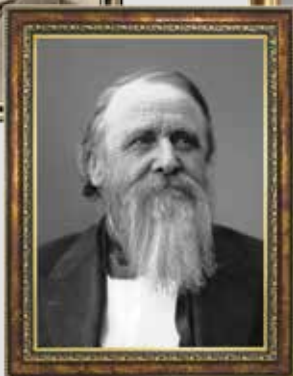
THEN

NOW

1884



R.W. Woodbury, Chamber Board President



Gov. John Evans, Early Chamber Leadership



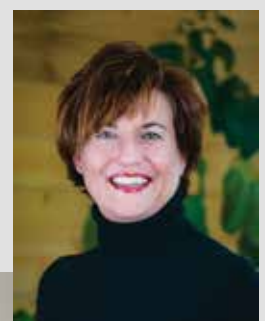
William Byers, Early Chamber Leadership



Todd Munson, Chamber Board Chair FY '16-'17



Denise Burgess, Chamber Board Chair FY '17-'18



Kelly Brough, President & CEO Denver Metro Chamber

CHAMBER BUILDING

THEN



Denver Chamber of Commerce building in 1884 at 14th and Lawrence streets.

NOW



Denver Metro Chamber of Commerce building, remodeled in 2014, at 1445 Market St.



THEN

1884

300
MEMBERS

NUMBER OF CHAMBER MEMBERS

NOW

3,000+

MEMBERS

INITIATION FEES

THEN

\$50

In 1884, members paid a \$50 initiation fee for the Chamber's building fund. Today, our member investments start at \$500 and go up from there with various benefits.

NOW

IN 2017



Initiation fees starting at

\$500

THEN

CHAMBER LOGO

◀ Original logo in 1884



NOW

2017 Anniversary logo ▶



DENVER METRO CHAMBER OF COMMERCE